

Product

Range of professional 230 Vac electromechanical barriers for busy use, designed and developed to operate in a wide variety of conditions such as large parking lots, motorway toll-gates with frequent reversing, sensitive sites where the bar must open spontaneously in case of a power failure and in industrial installations. Mechanical movement with crank to make the bar operate smoothly, also managing slowdowns in opening and closing.

Code		
P940070	MAXIMA 30	Electromechanical barrier 230 V for very intensive use up to 10000 Op/gg. Opening time 1.7 sec. with slowdown opening and closing . Max bar length: from 1.7 to 3 m.
P940071	MAXIMA 60	Electromechanical barrier 230 V for intensive use up to 2000 Op/gg. Opening time 9 sec. with slowdown opening and closing . Max bar length: from 4 to 6.4 m.
P940072	MAXIMA 80	Electromechanical barrier 230 V for intensive use up to 2000 Op/gg. Opening time 9 sec. with slowdown opening and closing . Max bar length: from 6.5 to 8 m.



Technical features

	MAXIMA 30	MAXIMA 60	MAXIMA 80
Useful passage	from 1.7 to 3 m	from 4 to 6.4 m	from 6.5 to 8 m
Opening or closing time	1.7 sec.	9 sec.	9 sec.
Control unit	CSB-BR		
Motor type	single phase	single phase	single phase
Gear unit type	in oil bath	in oil bath	in oil bath
Motor power supply	230 V	230 V	230 V
Slowdown	opening and closing	opening and closing	opening and closing
Impact reaction	electronic magnetic reverser	electronic magnetic reverser	electronic magnetic reverser
Locking	mechanical	mechanical	mechanical
Release	inside the structure	inside the structure	inside the structure
Frequency of use	10000 Op/gg	2000 Op/gg	2000 Op/gg
MCBF (Mean Cycles Between Failures)	5000000 Op	2000000 Op	2000000 Op
Environmental conditions	from -30 °C to 60 °C		
Protection rating	IP65		

ACCESSORIES



ATM25 - P120036 00001
Aluminium bar L=2.5 m with drop-shaped profile and red reflectors. Lights and rubber protection not included. Completely protected by new polystyrene packaging.



ATM30 - P120036 00002
Aluminium bar L=3 m with drop-shaped profile and red reflectors. Lights and rubber protection not included. Completely protected by new polystyrene packaging.



ATM40 - P120036 00003
Aluminium bar L=4 m with drop-shaped profile and red reflectors. Lights and rubber protection not included. Completely protected by new polystyrene packaging.



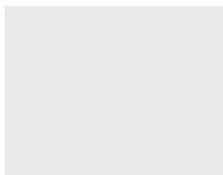
ATM50 - P120036 00004
Aluminium bar L=5 m with drop-shaped profile and red reflectors. Lights and rubber protection not included. Completely protected by new polystyrene packaging.



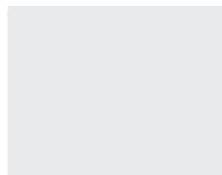
ATML60 - P120041
Aluminium bar L= 60m ø 92 mm. Lights and rubber not included. Completely protected by new polystyrene packaging.



ATML EXT2 - P120042
Extension L=2m for bar model ATML 60. Lights and rubber not included.



OMEGA AT - P120043
Single clamping of hand guard and screws for bar ATM



OMEGA ATM FRA - P120048
Fracture system clamping for bar ATM

ACCESSORIES

OMEGA ATML - P120044

Single clamping, hand guard and screws for ATML bar on MAXIMA 60/80. Bar not included.

OMEGA FRC ATML - P120045

New fork clamping for ATML bar on barrier model. MAXIMA 60/80. Bar not included.

ATM30 90° RG - P120065

Articulated bar 90° L=3 with lights R/G

ATM50 90° RG - P120066

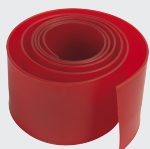
Articulated bar 90° L=5 with lights R/G

PCA ATM 3 - P120053 00001

Rubber protection (red) for fitting on bar L=3m max.

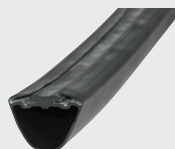
FCS MAXIMA 5 - P120033

2 additional limit switches for MAXIMA 30/50



PCA ATM 5 - P120053 00002

Rubber protection (red) for fitting on bar L=5m max.



PCA ATM 8 - P120053 00003

Protection rubber (black) for fitting on bars from L=6.0m to 8.0m.



KIT ATM LIGHT 3 R/G - P120052 00001

Red-green LED lights kit for fitting on ATM bars up to 3m.



KIT ATM LIGHT 5 R/G - P120052 00002

Red-green LED lights kit for fitting on ATM bars up to 5m.



KIT ATML LIGHT 8 R/G - P120052 00003

Red-green LED lights kit for fitting on ATML bars up to 8 m.



FCS MAXIMA 6-8 - P120034

2 additional limit switches for MAXIMA 60/80



RST ATM - P120049

Aluminium rack. Price for 3. Suspended foot not included. Available only for model ATML.



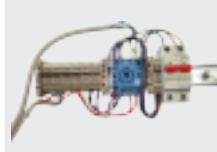
GA ATM - P120050

Adjustable suspended foot, powder coated cataphoresis treated.



FAF ATM R - P120054

Adjustable fork for bar model ATM and model ATML



SRV DIN - P120032

Standard DIN rail for interfacing barrier with parking system, configured and prewired with thermal magnetic switch, additional supply terminals, socket for metal mass detector and standard input/output terminal block

ACCESSORIES



DESME A15 - P111526

Pair of self-aligning photocells. Range 30 m. Power supply 24 V ac/dc. Pair of self-aligning photocells. Range 30 m. Power supply 24 V ac/dc.



DESME A15 O - P111527

Pair of self-aligning photocells. Range 30 m. Power supply 24 V ac/dc.



PHP - P903018

Pair of aluminium posts for THEA/DESME series photocells Height 522 mm