

# ELI 250 SERIES

ELECTROMECHANICAL AUTOMATION FOR SWING GATES



Opens the future



### • SMART TECHNOLOGY.

- The incorporated magnetic limit switches allow positioning precision and constancy, remain unchanged with variations in climatic conditions and are not subject to wear (ELI 250 BT).
- Control unit compatible with the EELink protocol.
- Shorter times for the opening and closing operations (ELI 250 BT and ELI 250 V).

### • SAFE USE.

- The version powered at 24V is specially designed

for simpler and faster installation in compliance with the safety standards laid down by the Machinery Directive.

→ Thanks to the antisquashing system, the operator inverts motion and prevents damage to people and property in the event of contact (BT).

### • SIMPLER INSTALLATION

→ The special foundation case makes it possible to extract the operator without removing the gate leaf.

CODE	DESCRIPTION	VOLTAGE	LEAF WEIGHT	LEAF LENGTH
P930118 00001	ELI 250 BT	24 V	up to 4000 N (~400 Kg)	3,5 m (with electric lock) *
P930114 00001	ELI 250	230 V	up to 3000 N (~300 Kg)	3,5 m (with electric lock) *
P930114 00003	ELI 250-V	230 V	up to 1500 N (~150 Kg)	up to 2 m

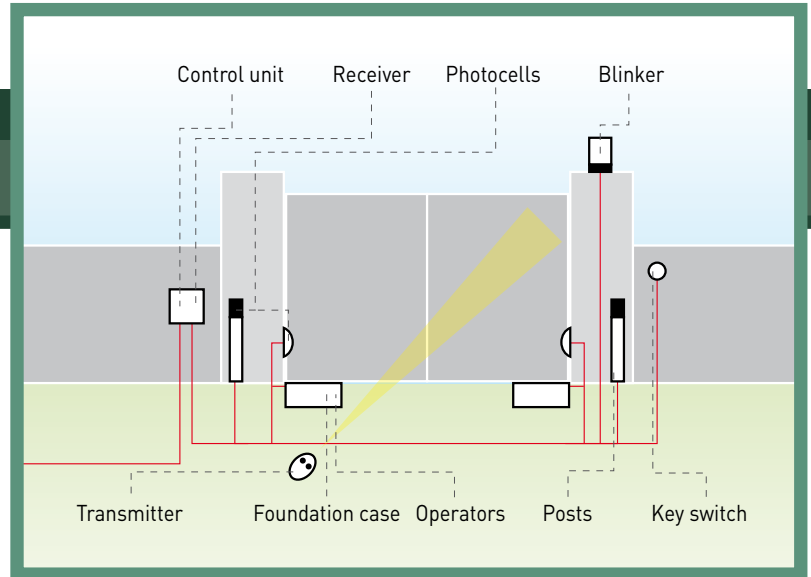
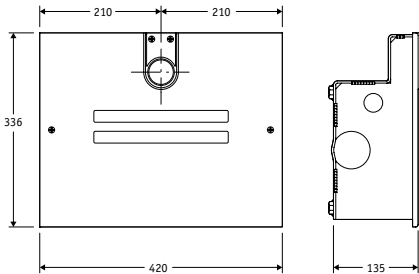
\* up to 2,5m without electric lock

## TECHNICAL FEATURES

	ELI 250 BT	ELI 250
CONTROL PANEL	LIBRA C MA	ALTAIR P (suggested)
REVERSIBLE/IRREVERSIBLE OPERATOR	irreversible	irreversible
POWER SUPPLY	24 Vdc	230 V~ ± 10%, 50 Hz single-phase
ABSORBED POWER	175 W	280 W
THERMAL PROTECTION	integrated	integrated
OPENING ANGLE	from -10° to +110°	from -10° to +110°
OPENING OR CLOSING TIME	15 s / 120°	28 s / 120°
IMPACT REACTION	torque limiter integrated in the control panel	torque limiter integrated in the control panel
TYPE OF LOCK	mechanical	mechanical
MANUAL RELEASE	release key	release key
OPERATING CYCLE	intensive use	semi intensive use
ENVIRONMENTAL CONDITIONS	from -20°C to + 50°C	from -20°C to + 50°C
DEGREE OF PROTECTION	IP67	IP67
OPERATOR WEIGHT	100 N (~10 kg)	100 N (~10 kg)
DIMENSIONS	see drawing	see drawing
	<b>ELI 250 V</b>	
CONTROL PANEL	ALTAIR P (suggested)	
REVERSIBLE/IRREVERSIBLE OPERATOR	irreversible	
POWER SUPPLY	230 V~ ± 10%, 50 Hz single-phase	
ABSORBED POWER	280 W	
THERMAL PROTECTION	integrated	
OPENING ANGLE	from -10° to +110°	
OPENING OR CLOSING TIME	14 s / 120°	
IMPACT REACTION	torque limiter integrated in the control panel	
TYPE OF LOCK	mechanical	
MANUAL RELEASE	release key	
OPERATING CYCLE	semi intensive use	
ENVIRONMENTAL CONDITIONS	from -20°C to + 50°C	
DEGREE OF PROTECTION	IP67	
OPERATOR WEIGHT	100 N (~10 kg)	
DIMENSIONS	see drawing	



**DIMENSIONS**



**ACCESSORIES**



**D113672 00005 - LIBRA C MA**

• Universal control panel for one or two 24V motors with limit switch with 1 or 2 wires. • Easy to wire also for centralised

connections, thanks to extractable terminals, and the AUTODIAGNOSIS function. • Safety thanks to electronic antisquashing control with amperometric detection. • Complete with incorporated two-channel receiver, ready for serial management, back-up battery and electric lock. • Total control of programming by digital display and three simple buttons. • Easy setting using the AUTOSET function which allows automatic setting of the operating parameters.



**D113703 00002 - ALTAIR P**

• Universal control panel for one or two motors up to 230V/0.5 HP of the electromechanical swing type. • Easy wiring also

for centralized connections, thanks to the extractable terminal blocks and the AUTODIAGNOSTICS function. • Security thanks to motor torque control, regulation of the working time for pedestrians and locked shut maintenance. • Complete with incorporated 2-channel receiver and input for pedestrian opening. • Total control of programming by digital display. • Easy setting by means of three simple buttons for programming logic and parameters. Easy to use on pre-existing systems thanks to total compatibility with ALTAIR.



**P125005 - BT BAT**

Thanks to the back-up batteries and battery charger, the BT BAT kit guarantees low voltage operation of the leaf in the event of power failure (LIBRA C MA, HYDRA R).



**NEW 2008**

**P111408 - SCS WIE**

Circuit board for direct connection of wiegand accessories (such as SELETTI, COMPAS SLIM, etc) to the control units QSC D MA, LIBRA C MA, LIBRA C MV, LIBRA C LX, VENERE D, LEO D MA, LEO MV, RIGEL 5 and ALTAIR P.



**D111761 - ME BT**

12/24 Vac electric lock board for BT operators.



**D111013 - ME**

12 Vac electric lock board.



**P123001 00001 - EBP**

230 Vac electric lock with zero stop resistance. Also available in 50 mm, 75 mm versions and at 24V.



**D121017 - ECB SX**

Left-hand horizontal electric lock. Also available in right-hand and vertical versions.



**NEW 2008**

**N733397 - BTCF 120 E**

Universal foundation case for ELI 250 BT, ELI 250, ELI 250 V with levers. Without release.



**NEW 2008**

**N733398**

**BTCF 120 E INOX**  
Foundation case in stainless steel with levers. Without release.



**N733304 - E180**

180° opening kit for underground operator ELI 250, ELI 250 V.



**N733345 - CFE**

Stop pack ELI 250.



**N733368 - CFE BT**

Stop pack ELI 250 BT.



**N733189 - SCT**

Release for ELI250 with triangular spanner.



**NEW 2008**

**N733392 - SCC**

Release for ELI250 with lever spanner.