



XTS wi-fi + Lithos Video Intercom Kit



CAME 
BPT



MONOLITH ENTRY PANEL WITH BUTTONS, EXPANDABLE TO 4 CALLS



COMPATIBLE SYSTEMS



Lithos is our entry panel for small apartment buildings. It is a load of technology with a brushed stainless steel AISI 316L finish. Expandable up to 4 calls. Its amazing simplicity and elegance enhance its solidity; with an IP54 protection rating. The "wide-eye" lens gives excellent performance, and it comes with a signal microprocessor, providing wide-angle aperture and zoom. Ready for wall installation, simply add 2 accessories to make it recess-mounted.



Recess mounted
7 mm thick



Wall mounted
30 mm thick



Intercom version

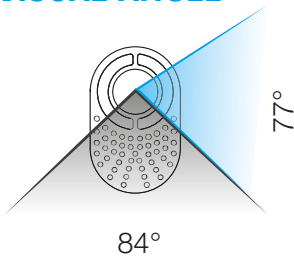


Video intercom version

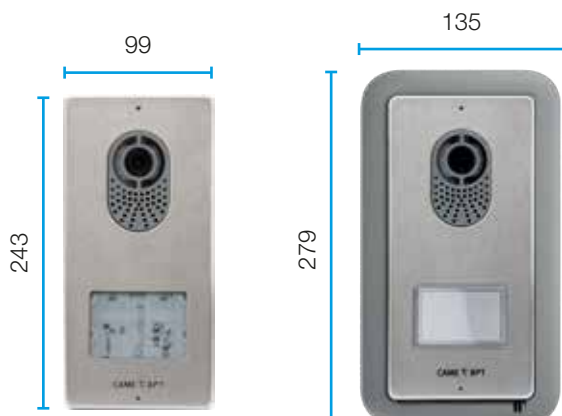


Water and dust protection
IP54

VISUAL ANGLE



DIMENSIONS (MM)



PLUS

AISI 316L brushed stainless steel finish

Intercom function

From 1 to 4 calls only by replacing the keys

Speaker, microphone and electric lock-timing adjustments

High efficiency 4 LED illuminator



PLUS

- AISI 316L brushed stainless steel finish
- Water and dust protection IP54
- Intercom function
- From 1 to 4 calls only by replacing the keys
- Speaker, microphone and electric lock-timing adjustments
- "Wide-eye" lens with 77° vertical and 94° horizontal aperture
- High efficiency 4 LED illuminator

LVC/01
62020070

TECHNICAL CHARACTERISTICS

MODELS	LVC/01
Dimensions (mm)	99 x 207 x 30
Power supply (V)	16 ÷ 18 DC
Consumption in stand-by mode (mA)	100
Max. absorption (mA)	250
Operating temperature (°C)	-25 ÷ +50
Protection rating (IP)	54
Video standard	PAL/NTSC
Video resolution (pixels)	680 x 512
Color	Brushed stainless steel

CODE DESCRIPTION

LVC/01
62020070

Video entry phone monolithic external unit for X1 system that can be expanded up to 4 calls.

AISI 316 brushed stainless steel finish. With NTSC/PAL camera sensor, 680x512 resolution and built-in microprocessor for digital signal processing. Wide-eye lens with 94° horizontal and 77° vertical aperture and digital zoom. It allows to adjust the sound of the microphone, the speaker and the activation time of the electric lock. Backlighting of the blue name-tag keys. Programming can be done manually or via software. IP54 water and dust protection.





PLUS

- Half-duplex speaker audio
- 7" TFT display Full touch-screen with Optical Bonding anti-glare technology for enhanced readability in brightly lit settings
- On-board WiFi for remotely controlling calls over smartphones and tablets running the specific App
- Local power supply 14 -18 VDC
- Up to 4 mobile device for managing the system from any remote location
- Configurable quick controls: main entrance door-opener, auxiliary command
- List of AUX commands for activating auxiliary functions
- "Panic" function for emergency calls to the porter (if present on the system)
- Audio video settings: ringtone volume, display brightness, interface backgrounds
- Different melodies for entry panels and landings
- Exclude ringtone key (the alert LED lights up when silenced)
- Self-inserting video of entry panels with cyclic selection
- Intercom calls to other receivers and smartphones and tablets
- Contacts list and favorites list
- Video answering service, stores up to 100, 10-second audio and video messages.
- Audio and video recording during conversations
- Live feeds of the connected IP video cameras
- Business function: for automatic door opening during business hours
- Block display function for cleaning
- Standard SIP protocol, codec video H.264, codec audio G711
- On-board web server for configuring and managing via the browser

XTS 7 WH WIFI 840CH-0030

TECHNICAL CHARACTERISTICS

MODELS	XTS 7 WH WIFI
Dimensions (mm)	185 x 129 x 24
Local power supply (V)	14 ÷ 18 DC
Local absorption (mA)	520
Consumption in stand-by mode (mA)	360
Operating temperature (°C)	0 ÷ +40
Protection rating (IP)	30
Video standard	PAL/NTSC
Frequency (MHz)	2.412 - 2.472
Wireless Standard	IEEE 802.11b/g/n
Color	White

CODE	DESCRIPTION
------	-------------

**XTS 7 WH WIFI
840CH-0030**

Full-touch speaker video intercom for X1 system, 7" TFT touch screen display, Wi-Fi and Graphical User Interface - white.

Wall monitor with 7" TFT touch screen display with Moth-Eye technology, integrated Wi-Fi for the remote operation of calls on smartphone with dedicated app. User interface for management of the functions of video entry phone, intercom calls, video recording. It uses the SIP protocol and G711 audio codec and H.264 video codec. 14-18 VDC local power supply. Integrated web service for configuration and firmware updates. A bracket is included for wall installation on 503 box (horizontal or vertical) and on round box Ø 60 mm. Suitable for built-in installation with dedicated box. Compatible with X1 and XIP systems.



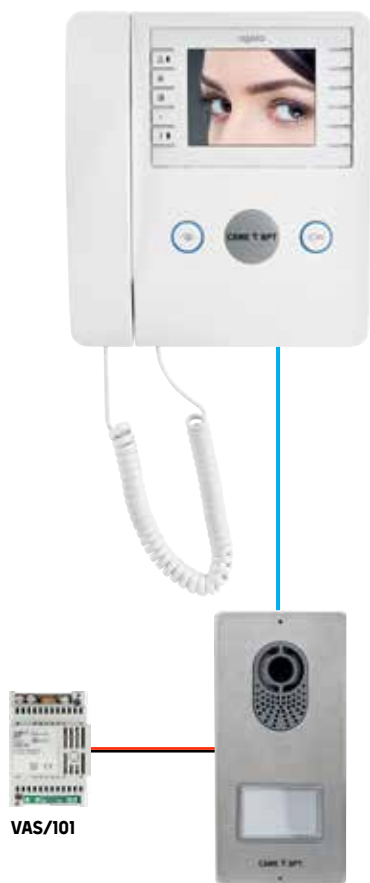
CONNECT YOUR OLD X1 SYSTEM TO THE NEW APP

2 WIRED SYSTEMS ONLY

Remote management of a X1 video entry system is now easy. Just replace the old video entry system with a XTS version and connect to the home WIFI network. No need to change cables or make other changes to the equipment.*

You can answer calls from the entry panel from anywhere in the world via the CAME cloud (WiFi or data network required). The XTS video entry receiver includes 4 app licenses to associate it with as many mobile devices.

FROM THE OLD VIDEO ENTRY SYSTEM



Legend

- = VMC/1D or UTP CAT 5
- = POWER SUPPLY

... TO THE NEW: XTS.

4 APP LICENSES INCLUDED



AVAILABLE TO DOWNLOAD AT:



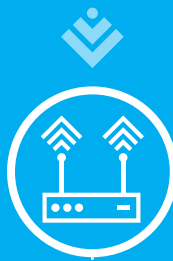
* It is necessary to consider the consumption of the XTS video entry system, in some cases it is necessary to add a local power supply (VAS/101).



USE YOUR OWN WIFI TO CONNECT TO XTS

YOU CAN USE THE HOME CONNECTION TO BRING THE VIDEO INTERCOM ON TO THE NETWORK, AT NO EXTRA COST.

XTS is equipped with a WIFI card and with a simple configuration it can be connected to the Internet. In this way, you can use the video door entry system remotely via your smartphone or tablet.



ROUTER

The device, equipped with a WiFi card, can be hooked up to your own home router and take advantage of the home network to connect to the internet.



INTERNET

The internet connection, exploiting the home network, does not incur any additional costs on top of your network provider subscription.



CAME CONNECT

It is the Cloud Technology platform that allows you to remotely manage the system guaranteeing maximum security levels. All for free.

FOUR APP LICENSES INCLUDED*

Each internal derivative XTS 7 includes 4 app licenses to record as many mobile devices.



NOTE

The WiFi function is only available on XTS versions with a 7" display.

*XTS 7 IP includes up to 19 app licenses for each device.



EASY APP SETUP

1



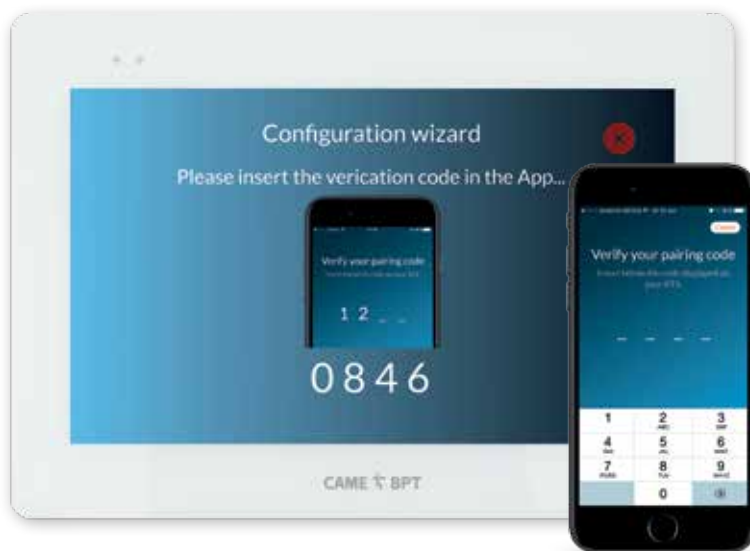
CONNECT YOUR SMARTPHONE OR TABLET TO THE APARTMENT WIFI

2



DOWNLOAD THE VIDEOENTRY APP, ENTER, AND SELECT THE XTS VIDEO ENTRY RECEIVER

3



ENTER THE PAIRING CODE DISPLAYED ON THE XTS MONITOR

4



CONFIRM IF REMOTE CALLS VIA THE CLOUD ARE REQUIRED

5



CONNECTIVITY COMPLETED
THE MOBILE DEVICE IS NOW ABLE TO RECEIVE CALLS VIA THE VIDEOENTRY APP.

REMOTE MANAGEMENT BY SMARTPHONE



REMOTE MANAGEMENT

- RECEIVE CALLS ON YOUR SMARTPHONE AND TABLET
- OPEN YOUR FRONT DOOR
- SWITCH ON YOUR LIGHTS
- DISPLAY THE ENTRY PANELS LIVE VIDEO
- CALL YOUR HOUSE ON THE XTS RECEIVER





VIDEOENTRY APP

THE APP THAT ALLOWS YOU TO MANAGE ALL THE CAME BPT REMOTE VIDEO ENTRY SYSTEMS

This app, available free for both iOS and Android devices, allows you to manage calls from the entry panel directly from smartphones and tablets.

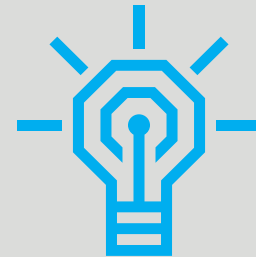
Once you have downloaded the app and enabled the internal extension to the CAME CONNECT service, just enter the user credentials (present in the appropriate menu of the terminal) to complete the association of mobile device on the XTS terminal.

RECEIVE CALLS FROM THE ENTRY PANEL ON YOUR SMARTPHONE

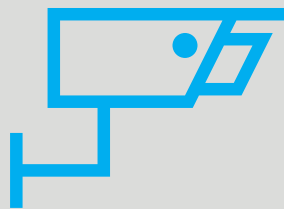
When a call is made from the entry panel it is activated on the XTS and also on the app of the smartphones connected to the extension. In this way you can see who is at the door, answer and open from your mobile device, wherever you are (WIFI coverage or data network are necessary).



OPEN YOUR FRONT DOOR



SWITCH ON THE LIGHTS



DISPLAY THE ENTRY PANELS LIVE VIDEO



CALL YOUR HOUSE ON THE XTS TERMINAL*

* available from 4Q 2018

AVAILABLE TO DOWNLOAD AT:

