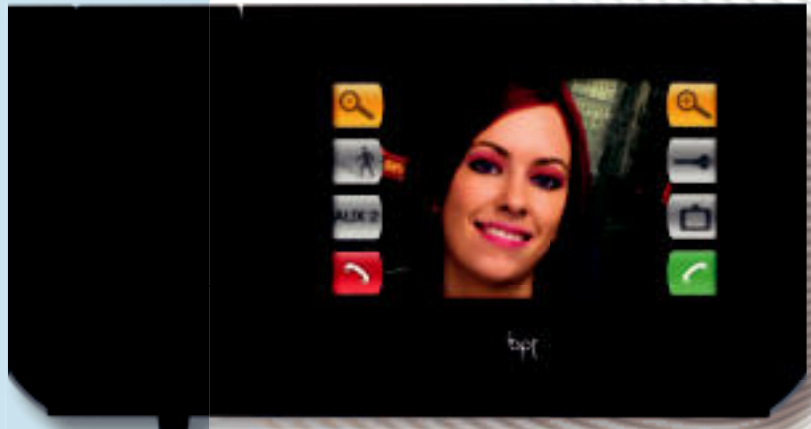


# MITHO

## Colour touchscreen video entry control system





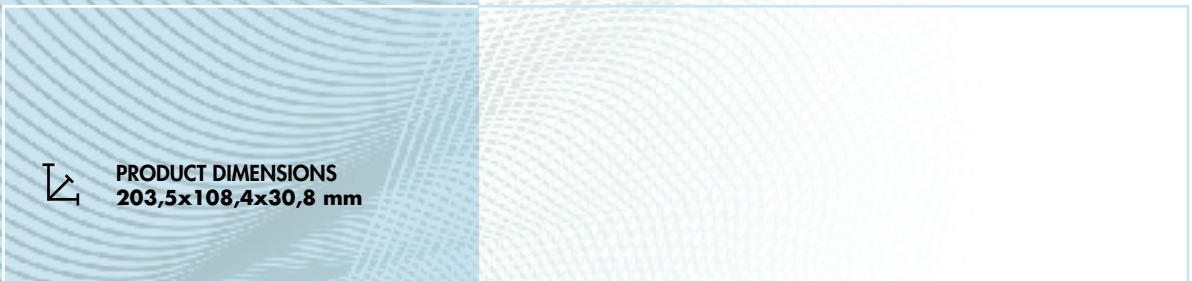
Fusion black colour


MITHO is the innovative colour touchscreen video entry control system designed for advanced use: it represents a new concept of user-system interface that emphasizes simplicity and easy access to the various functions available. Many innovations have been introduced in the new terminal, starting with the 4.3" touchscreen LCD display with 16:9 widescreen format which allows full-screen navigation through menus that can be selected without using visible keys, amplifying the user's interaction with the system. The navigation within the various menus is simple and straightforward, based on colour codes that facilitate the association of the coloured functions. MITHO is therefore much more than a normal video entry control system: connected to X1, the 2-wire system by Bpt, it offers a series of innovative functions such as image zoom, video entry control voice mail and messages (from the porter for example) with integrated receiver and hands-free audio functions.



Ice white colour

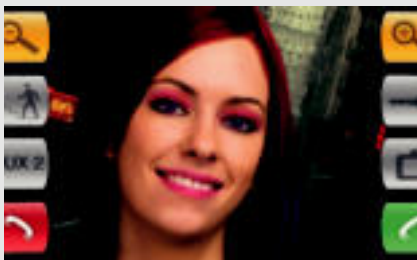
Page reference for product codes		
SYSTEMS	 2-wire	Page 78
	 on Bus	Page 135



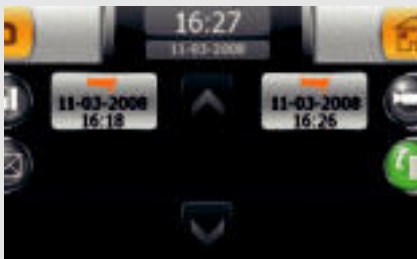
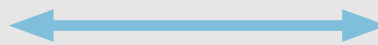
 **PRODUCT DIMENSIONS**  
203,5x108,4x30,8 mm



It is possible to set and consult the following functions:  
Time, date, wake-up alarm, language, instructions and video adjustments



12 steps  
image zoom



Video entry control system voice mail that can store up to 10 video messages



Porter voice mail with a maximum of 30 messages



Display of images from entry panels or surveillance units, max 4

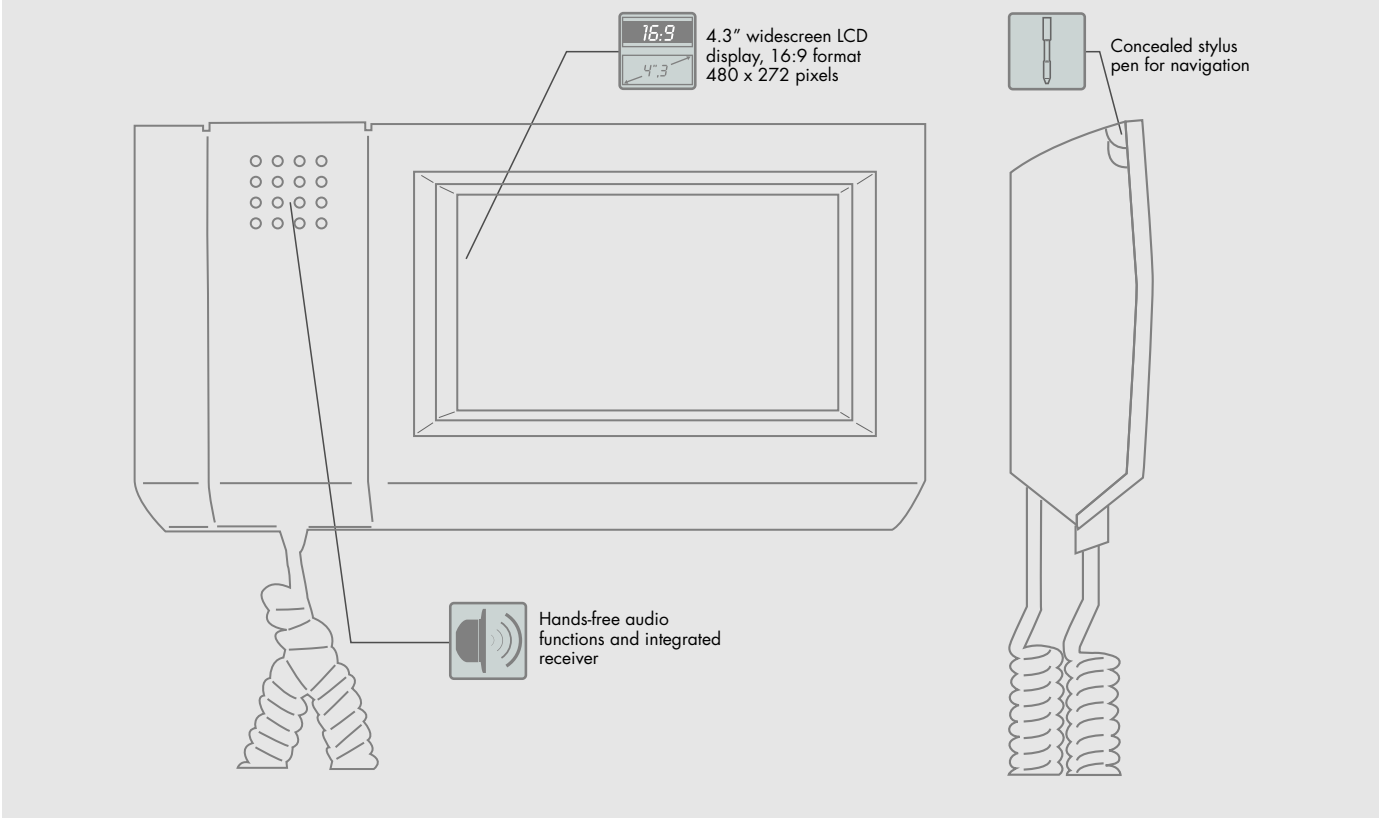


Intercom address book



Possibility to select 9 different ring tunes

**TECHNICAL CHARACTERISTICS**



**INSTALLATION**



Local power supply (3 PIN modules)

max 1 monitor

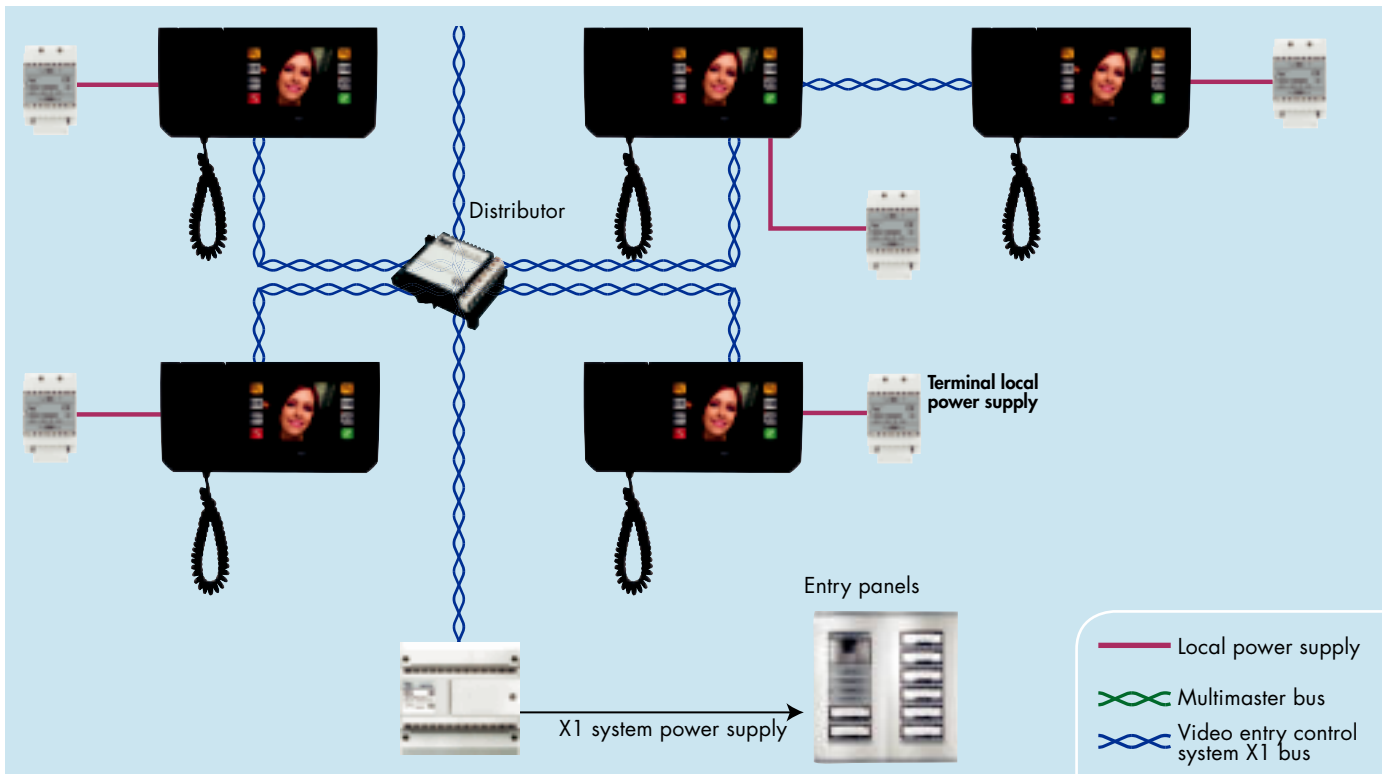


Local power supply (8 PIN modules)

max 3 monitors



## INSTALLATION/LINKS



Up to 10 Mitho terminals can be connected, for the same receiver, in free topology. The terminals of the same receiver can be connected to one another through the dedicated multimaster bus in order to realize global commands (time synchronization, data and events).

## INSTALLATION

